

FBM Babcock Marine

FBM Babcock Marine



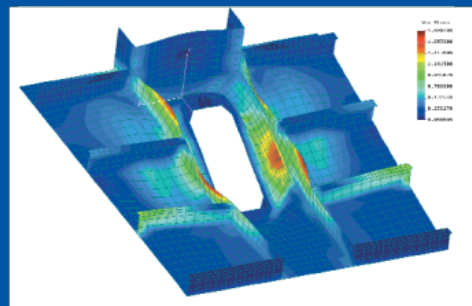
High Speed Ferries



Para-Military Vessels



Specialist Craft



Technology and Support Services

babcock FBM

Babcock International Group PLC

FBM Babcock Marine

FBM Babcock Marine Ltd is a multi-skilled company with a long history of delivering high quality vessels and first class support globally to the challenging naval, para-military, offshore and commercial marine sectors.

FBM Babcock's product range includes:

- Medium and High Speed Passenger Ferries
- Medium and High Speed Passenger and Vehicle Ferries
- Para-Military Patrol Vessels
- High Speed Interceptors
- Landing Craft
- Crewboats
- SWATH Vessels
- Specialist Craft

FBM Babcock's technology and support service includes:

- Vessel Design
- Construction / Manufacture
- Design Licencing
- Technology Transfer
- Shipyard Technical Support
- Training
- Spares Procurement
- Technical Consultancy

With over 1000 vessels built under licence, FBM Babcock has always recognised the benefits of working in partnership with other shipyards internationally. Licencing, technology support and technology transfer packages are available to a variety of levels to assist other shipyards in building FBM Babcock designed vessels.

FBM Babcock is part of Babcock International Group plc, a UK based multinational support services, facilities management and engineering company, providing the financial strength and stability that demanding customers require.



Protector Class, Chile



Solent Class, UK



TriCat Class, USA



FBMA Babcock Marine, Philippines



As expected from a world-class company, FBM Babcock's 'Quality Management System' is ISO9001 approved.

Renowned as being one of the world's leading designers and manufacturers of High Speed Ferries, Para-military Vessels and Specialist Craft, FBM Babcock has delivered over 16,000 vessels to more than 60 countries. These vessels are predominately built in aluminium, although the company also designs and builds in steel, glass reinforced plastic (GRP) and advanced composites.

Design Excellence, Quality, Capability and Reliability are the four fundamental and essential ingredients of all FBM Babcock vessels. This has enabled the company to acquire an enviable reputation for excellence.

Investment in research is also at the heart of FBM Babcock. Innovation, achieved through many years of research and experimentation, continues to optimise design and construction techniques, as well as the technological commitment to pursue the perfect vessel solution for every customer. The company can justifiably claim to have been one of the pioneers of waterjet propulsion and composite waterjet inlet ducts for both commercial and military applications, as well as being a leader in the use of extruded light alloy planking in small ship construction. The company's present research focus is within the areas of fast hull forms, wake & wash minimisation and seaworthiness.

FBM Babcock has a highly qualified and respected staff of experienced naval architects, mechanical engineers, electrical engineers, draughtsmen, project managers and support personnel. This skilled workforce upholds the company's commitment to the development of, and investment in, new technology.



Solent Class, Bahamas



TriCat Class, Greece



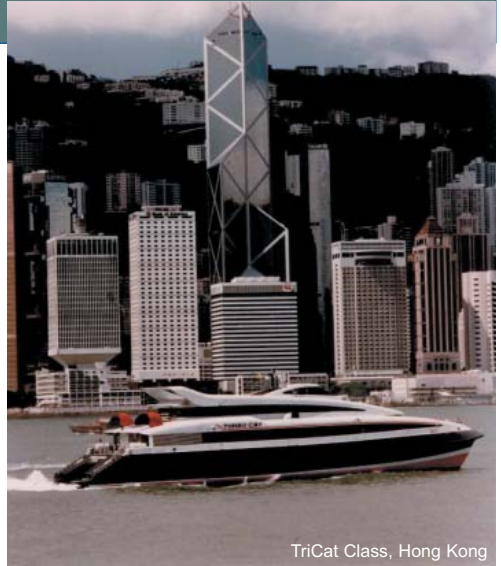
TriCat Class, Hong Kong

Fast Ferries from FBM Babcock Marine

FBM Babcock has delivered a wide range of medium and high speed ferries to customers all around the world. Covering the whole array of operator's requirements, **FBM Babcock's range includes:**

- Riverbus for rivers, lakes and harbour areas
- Passenger fast ferries for coastal operations
- Car and passenger fast ferries for coastal routes
- Car, truck and passenger fast ferries
- SWATHs for open water

Capacities vary between 60 - 1200 passengers, 9 - 200 cars and up to 12 trucks. Vessels with speeds of up to 54 knots have been delivered, although maximum speeds of 32-40 knots are a more common requirement.



TriCat Class, Hong Kong



TransCat Class, Portugal

FBM Babcock's vessels have become firm favourites with customers and, equally importantly, their passengers. In keeping with FBM Babcock's philosophy and continuous investment in research, the company never stands still. Consequently, all designs are continually being updated and improved in order to reflect new technology.



TriCat Class, South Korea



SWATH, Portugal

Para-Military Craft from FBM Babcock Marine

FBM Babcock has a long reputation of delivering excellence to naval forces, customs services and coastguards world-wide.

The present range includes:

- Fast interceptors, capable of in excess of 50 knots
- High speed monohull and catamaran patrol boats for coastal operations
- Medium and high speed vessels for offshore operations

Up to 60m (200ft) in length, vessels are built from composite materials, aluminium and steel.

Designs are optimised for the customers' individual requirements but typical roles include:

- EEZ management
- Counter terrorism activities
- Illegal immigration interdiction
- Anti-piracy patrols
- Fishery protection patrols and inspections
- Search and Rescue
- Pollution monitoring

The changing para-military operational environment is resulting in an increasing focus on smaller flexible high speed patrol boats for use in coastal areas. FBM Babcock's extensive experience in this market, coupled with its state of the art high speed ferry technology, means it is perfectly set to deliver vessels which fulfil the modern requirements of naval and coastguard forces.



Protector Class, UK



Protector Class, Bahamas



Protector Class, UAE



Interceptor Class, UAE

Specialist Designs from FBM Babcock Marine

Although all FBM Babcock vessels are carefully tailored to the specific requirements of each customer, on occasions a particular role can be fulfilled only through a special design. In this highly bespoke area, FBM Babcock's ability and reputation for specialist design and build capability is recognised world-wide, particularly by military customers.

FBM Babcock's extensive design capability can deliver innovative solutions to a customer's specific requirement. From initial concept, right through to final design, specialist vessels have been produced either through local licenced manufacture or from a FBM Babcock build yard.



Fast Response Craft, UK

Examples include:

- Landing craft
- Work boats
- Special operations craft
- Fast intervention service craft / crewboats
- SWATH vessels

FBM Babcock can be relied upon to deliver vessels that fulfil your requirements.



Crew Boat, Asia



Loadmaster, Kuwait



SWATH, UK



Bridge Erection/Combat Support Boat, USA



Technology and Support Services from FBM Babcock Marine

The attention that goes into an FBM Babcock vessel is not just confined to the design, but also extends to the support provided to the build yard and to the continuing after-sales care offered to the customer.

FBM Babcock's Technology and Support Services supply a full range of services, including:

- Licence Build - tailored support to shipyards that have been licenced to build commercial high speed ferry designs and / or para-military vessels to FBM Babcock designs
- Spares procurement – with a dedicated spares and support team on hand to quickly source spare parts and arrange dispatch world-wide
- Technical Support – either from the design office or support personnel, for build yard or in-service assistance
- Repair and refit assistance – including definition of required work, full specification and design packages, undertaking work, or overseeing work at third-party yards
- Research and Consultancy – including evaluation studies, third-party design assessment and tender origination and evaluation

FBM Babcock's technology transfer includes the provision of proven designs, assistance with upgrading of customer capabilities, the availability of experienced FBM Babcock personnel to support clients as required and the ability to respond quickly to vessel requirements.



Build support



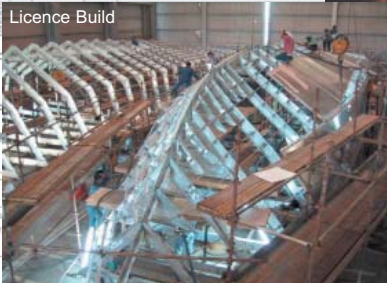
Procurement Support

The licencing of designs to other build yards world-wide is an important aspect of FBM Babcock's business. With over 1000 vessels built under licence to date, the benefits of working in partnership with other shipyards has constantly been recognised by FBM Babcock.

The level of support will naturally depend on individual shipyards' requirements, but can include areas such as personnel training in an FBM Babcock yard prior to in-country build; the supply of cut parts or unfinished hulls; design documentation and bill of materials. In addition, FBM Babcock can also supply the appropriate personnel to assist shipyards in build familiarisation.

Whatever the scope of the licence, it is consistently sustained through extensive support from a quality company.

Licence Build



Design Development





FBM BABCOCK MARINE

5 Town Quay, Southampton,
Hampshire. SO14 2HJ UK
tel: +44 (0)23 8021 0000
fax: +44 (0)23 8021 0001
e-mail: fbm@babcockbes.co.uk
web: www.babcockbes.co.uk



FBMA BABCOCK MARINE INC

Arpili, Balamban, Cebu. PHILIPPINES
tel: +63 32 465 0001 - 0007
fax: +63 32 465 0008 - 0010
e-mail: fbma@fbma.com.ph



FBM Babcock Marine - design and sales of commercial and naval vessels, including fast ferries, high speed craft, work boats, patrol boats, offshore support vessels, special service craft, and licensing of FBM Babcock designs. Project build management inclusive of sub-contract designs and associated technical support, also the provision of spares, technical documentation and crew training.

**High Speed Ferries • Para-Military Vessels • Specialist Craft
Design • Build • Support**